

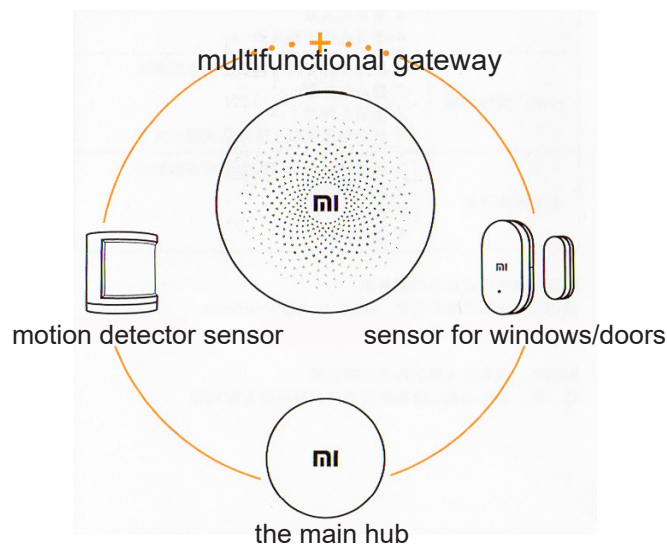
Thank you for choosing Mi Smart Home Kit

Mi Smart Home Kit - is a multifunctional gateway with a presence of motion sensor, for windows / doors and the main hub. This set of devices is very easy to install and they are quite easy to manage.

Via Mi Smart Home Kit, you can use these functions: a night light, smart notifications, wireless doorbell, and also these can be variously combined with other smart devices.

* This device is intended for indoor use only

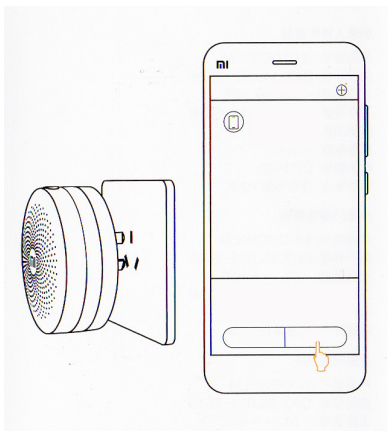
* the whole set of Mi Smart Home Kit, on release from the factory, is by default connected to the gateway, so after installation of the device, you can immediately use it.



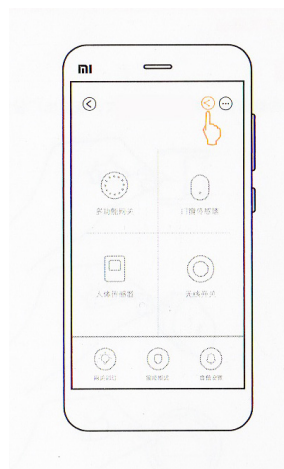
Connecting the new device

First, connect the multifunctional gateway to the power supply and at the same time, make sure you connect your smartphone to a WiFi network. Open the Mi Smart home App and choose a fast connection of new devices or in the upper right corner, click +, and add to the list of devices Mi Smart Home Kit.

* The best place to connect the multifunctional gateway: away from the wireless router, with the best distance of 2 meters.



Sharing Device

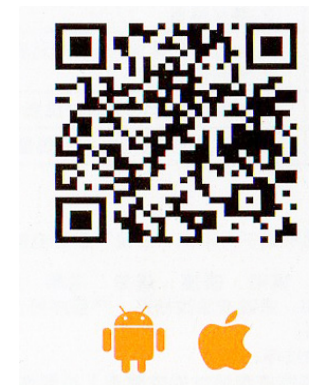


In order to use the device simultaneously with other users, on the main page of Mi Smart Home Kit press button "options" and you will be able to connect to the other members of the family Mi Smart Home Kit.

Quick Setup

Download an application

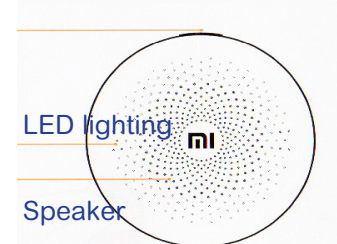
In Mi store find «Mi Smart House» or scan the QR-code.



Meet your devices

Mi multifunctional gateway

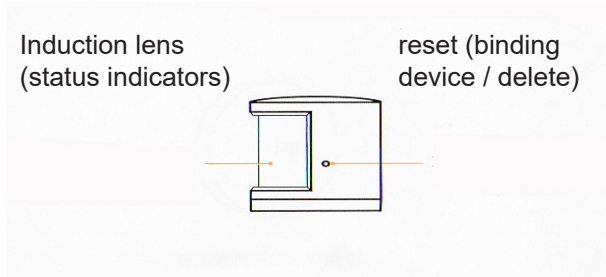
One click: On / Off
Double-click : home security (on / off)
Three clicks: adding devices



* safe use of the device in areas that are below 2000 meters above sea level

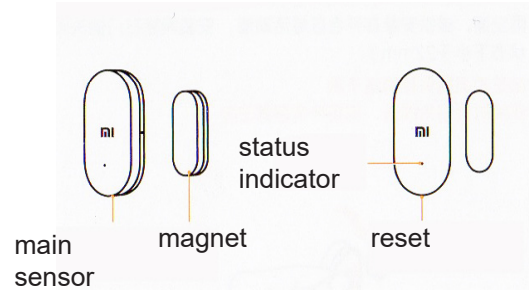
The Mi multifunction gateway has a built-in Smart Module - this is the control center of Mi Smart Home Kit. Due to the multifunction gateway, each sensor can be connected to other Smart devices.

Motion Sensor



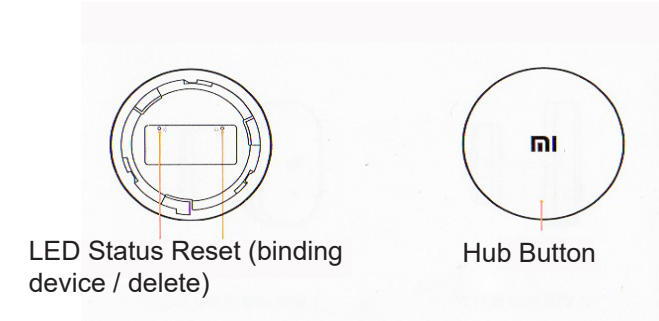
Infrared motion sensor is used function to detect movement of people or animals indoors. Low power consumption, easy installation without tools, placement anywhere.

Sensor for windows / doors



Sensor for windows / doors consists of a main sensor and the magnet, which are installed close to each other and fixing initial position of windows or doors. Low power consumption, easy installation without tools, install and use immediately.

The main hub



The main hub - a new type of remote control devices, with low power consumption. Very compact, so it can be placed anywhere, easy to install without tools. Install and use immediately, you can easily control the operation of lamps, sockets and smart devices.

Logging in the App

After a quick installation of the device in accordance with the instructions, and after a successful connection to the Smart Home Kit smartphone user, you can enjoy all the advantages of this device:

1: Night Light

- Install motion sensor near the bed
- Using a smart phone, set the desired color

2: Notifications

- Install sensor for window / door sensor or motion in the desired area of the room
- In «Smart House» App select necessary functions
- One-click on «Safe Mode», activate the protection of your home. In case of opening a window or door, or if someone entered the house, the main hub immediately emit a corresponding sound, and you'll get a notification on your smartphone.

3: Doorbell

- Set the main hub on non-metallic surface
- Click on the button of the main hub and multifunction gateway will immediately beep doorbell
- The doorbell and its volume can be adjusted in the Smart House App

4: Controlling other devices

- In Smart House App install house management configurations
- After a successful installation, with one click, you can operate the hub device
- More fun is waiting for you

You need to know

1. Before using the Mi Smart Home Kit, you must be sure you have carefully read the instructions.
2. Mi Smart Home Kit is designed to improve the conditions

of life in your home, and is not a security measure, since it does not apply to products in China compulsory certification (3C) the 19th paragraph, which refers to the product categories for security.

3. Mi Smart Home Kit is designed to inform about the status of devices, and not for a special home security, buildings, warehouses or any business premises. If the user violates the rules of use of the goods using our device as a special security facilities, the company bears no responsibility.

Installation

Distance for the effective operation of the device: select a suitable site for the installation of the sensor, it is necessary to reset the factory settings using a special needle. After this multi-function gateway will make a corresponding sound, which signals that you chose the optimal distance between the sensor and a multi-function gateway.

Motion Sensor

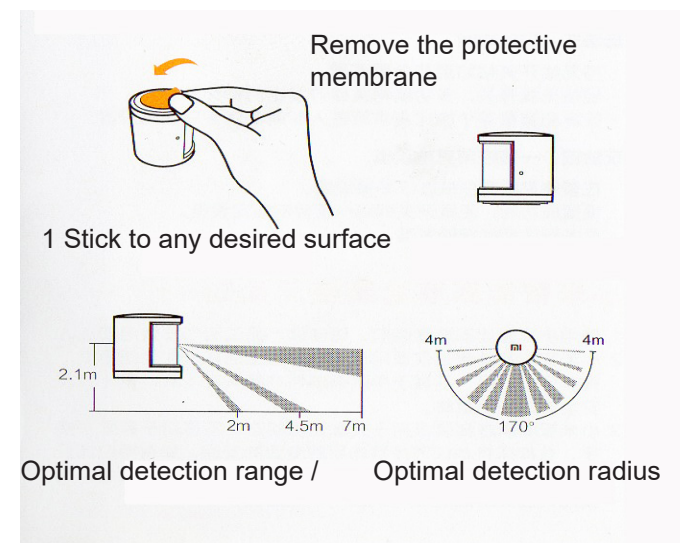
Method 1: You do not have to stick with the back of the sensor to the wall or other surface, you can simply install it in the right place.

Method 2: Remove the protective cover (in kit of your device you get adhesive membrane) and you can stick the sensor

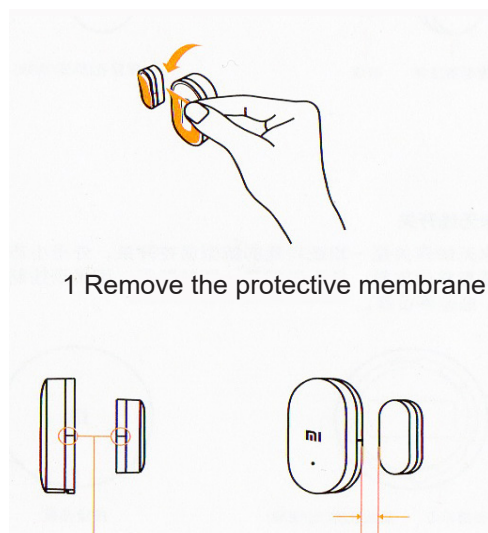
to the back of any surface or wall.

* Optimal height at which the sensor should be, 1.2-2.1m. At a height of less than 1.2 m, the detection range becomes smaller, but it does not affect its use. When you place the sensor more than 2.1m, in the room will appear blind spots, so there can be problems with finding people, animals.

* During installation, pay special attention to induction lens. It should be directed to the side of space that you want to monitor. Install or stick the sensor maximum close to the edge of a table or cabinet.



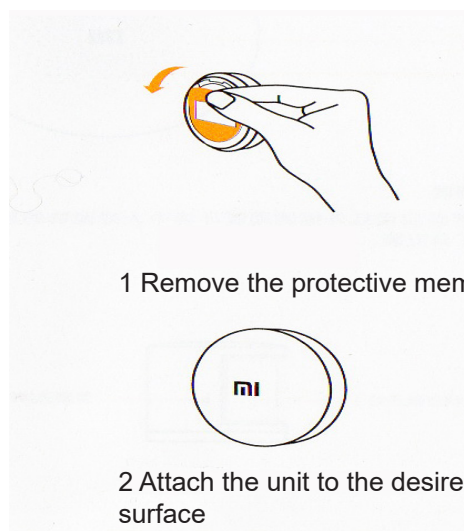
Sensor for windows / doors



During installation, try as much as possible to balance the location of the primary sensor and the magnet at a special mark (see Figure 2)

Attach the device to the desired surface (recommended to install the primary sensor on the immovable surface, and a magnet on the surface, which is expected to be opened. The allowable distance between the main sensor and magnet 22mm.

The main hub



* Glue unit on a dry surface

* Place the hub on the main non-metallic surface, since it affects its work

New devices

To add a new device or restore the factory settings, you can use one of the two following methods:

Method 1: Open the smart home and on the main page of the multifunction gateway click on «add device» by following the instructions set out below, do a factory reset.

Method 2: Continuously press three times on button of a multifunction gateway, follow the instructions set out below, do a factory reset.

* When you connect smart devices without a hole for reset, read the instructions for use of such a device

* When connecting the device to another gateway, you need to reset the device, and then add a new device by following the above described scheme.

Reset

Press on the hole with a special needle and hold it for 3 seconds, then the device status indicator blinks three times, signaling the successful resetting.

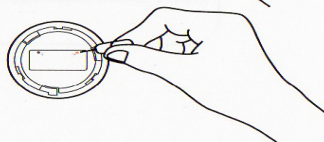
Movement sensor



Sensor for windows / doors



The main hub



Warranty

Warranty service is carried out in accordance with the law on «the rights of consumers of China» and «Law of the PRC on the quality of products.» The warranty service includes:

During the warranty period you have the right to repair, exchange or return an item. For repair, replacement or return of goods you need to present a receipt.

Type of Service Terms of Service

Baseless returns

1. baseless return only in the official shops and only within 7 days after the purchase (after signing a guarantee of 7 days)
2. Return of goods is only possible with its package

Refund of purchase (product quality)

1. In the event of a problem, you can return within 7 days

after the signing of the guarantee 2. Return of goods is only possible with its package

Purchase Exchange (product quality)

in case of a problem, goods can be replaced within 15 days after the signing of the guarantee

Warranty repair of purchase (product quality)

In the event of problems, possible free warranty repair of the goods within 1 year after the signing of the guarantee

The list of circumstances (including, but not limited to), under which compensation is not possible:

- The end of maintenance period, fall, neglect, abuse, liquid ingress, accident, broken or slipped the label and marking device;
- The warranty period is ended;
- Damage caused by force majeure, such as lightning, fire or flood.
- Damage that does not meet "fault list" service center Xiaomi;
- Failure of the "fault list", which arose in connection with the human factor, and which interfere with the normal operation of the device.

List of faults

Multifunctional Gateway

1. Gateway cracks due to construction or material device
2. Malfunction nightlight
3. If you have problems with notifications
4. Problems with the connection to the network Wifi

The motion sensor

1. The occurrence of cracks due to construction or material device

2. Malfunction Indicator
3. If you have problems with resetting
4. Problems with tracking feature

Sensor for windows / doors

1. Appearance of cracks due to construction or material device
2. Malfunction Indicator
3. If you have problems with resetting
4. If you have problems with the function of monitoring the status of the windows / doors (except in cases where the distance between the sensor and magnet too large)

The main hub

1. The occurrence of cracks due to construction or material device
2. Malfunction Indicator
3. If you have problems with resetting
4. If you have problems with the on / off button

The presence of toxic and hazardous substances

There are no any of elements of Pb,Hg,Cd,Cr6+, P, BB, PBDE in product or its presence is lower than the limit value according to SJ / T11363-2006 requirements.

xiaomi-mi.com