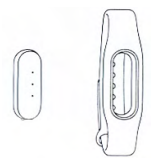


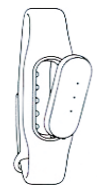


Mi band Pulse

1. Assembling Xiaomi's Fitness-Bracelet (Mi band)

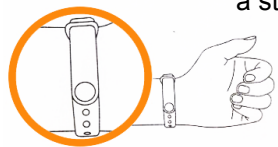


take the basis of the bracelet and a strap



Basis of the bracelet - strap

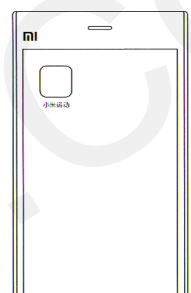
insert the bracelet basis into a strap



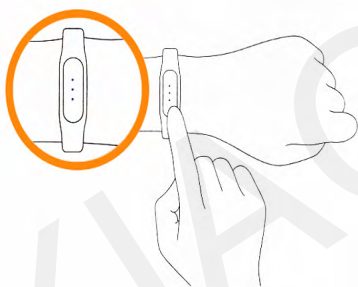
put a strap to your wrist

2. Installing Mi band App

Install Mi Health App or scan the QR-code and download the Mi Health App.



3. Mi band connection



Turn the Mi band App on. Then your Xiaomi smartphone should detect the Fitness-Bracelet on base of the smartphone's registration number.

Indicators on the smartphone will turn white. Gently press them few times to finish the registration.

4. Mi band usage



1/3 steps to a goal



more than 1/3 steps to a goal



A goal is achieved

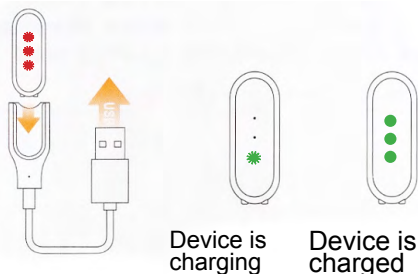


more than 2/3 steps to a goal

After a successful synchronization the Mi band immediately starts to monitor the activity of your movements and the trace quality of your sleep, and heart rate. The quantity of included indicators shows the intensity of your movements. You can look at your bracelet and check the indicators at any time.

5. Charging a battery

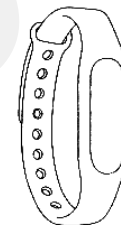
3 red flashing lights indicate a battery is running low. Please, charge your device.



6. Main specifications

Device name: Mi Band (Lightsensitive)
Model: XMSH02HM
Weight: 5.5g
Temperature range: -10C – 50C
Bracelet length: 225mm
Material of the fastener: aluminium alloy
Requirements: Android 4.4 and newer, Bluetooth 4.0 compatible with iOS, iPhone4s/5/5s/5c/6/6s/6 Plus

Battery volume: 45mAh
Battery type: Li-polymer
Synchronize: Bluetooth 4.0
Water resistance level: IP67
Length: 157mm-205mm
Strap: poliurethane



XIAOMI-MI.COM

The presence of toxic and hazardous substances

Title	Toxic and hazardous substances or elements					
	Pb Plumbum	Hg Mercury	Cd Cadmium	Cr Hexavalent Chromium	PBBs polybrominated biphenyls	PBDEs polybrominated diphenyl ethers
Basics of the bracelet	x	o	o	o	o	o
Battery	o	o	o	o	o	o
Strap	o	o	o	o	o	o
Bracelet fastener	o	o	o	o	o	o
USB cable	x	o	o	o	o	o

Warranty

The warranty service of Xiaomi Fitness-Bracelet “Mi band” is carried out in accordance with the law of «consumer rights» and the «Law on the quality of products.»

The warranty service includes:

During the warranty period you have the right to repair, change or return the item. For repair, replacement or product return you must provide a receipt.

1. Within 7 days from the date of purchase, if the problem from the «List of faults» occurs, Xiaomi service center determines the cause of the problem. Then you choose between free product replacement, refund or repair.

2. Within 8-15 days from the date of purchase, if the problem from the «List of faults» occurs, Xiaomi service center determines the cause of the problem. Then you choose between free product replacement or repair.

3. Within 12 months from the date of purchase, if the problem from the «List of faults» occurs, Xiaomi service center determines the cause of the problem. Then you are provided with free repair.