

COMMUNITY



GLOBAL

COMMUNITY



GLOBAL

COM



GLO

Aqara

COMMUNITY

GLOBAL

COMMUNITY



GLOBAL

COMM



GLO

COMMUNITY



GLOBAL

COMMUNITY



GLOBAL

Aqara Intelligent Curtain

(ZigBee version)

User manual and warranty card

[xiaomi-mi.com](http://xiaomi-mi.com)

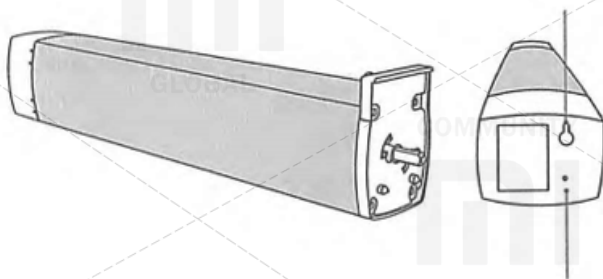
[Xiaomi-mi.com](http://Xiaomi-mi.com)

## Overview

Smart cornice Aqara Intelligent Curtain (ZigBee version for opening and closing curtains), has a super-quiet engine, running through the ZigBee wireless interface, also it has a stop function if there is resistance when the curtain moves, manual opening/closing. In conjunction with equipment having a gateway function, (hereinafter referred to as the "gateway"), you can remotely control, set a time of the opening/closure, synchronize the cornice with the various "smart" devices of the Smart House ecosystem.

\* This product and its accessories must be used within the premises, it is recommended to commission the installation of the cornice to a professional contractor. Installation should be carried out only with the main power switch turned off, after installation is completed, turn on the main switch and synchronize the cornice with the gateway through the Mi Home application (see "Installation Instructions" and "Add a Device").

Button



Indicator

## Installation

Scan the QR code below to view the video instructions for installing the rail guide and the cornice.



## Quick settings

This product is compatible with the smart platform Mi Home, it can be controlled via the mobile application Mi Home, supports MIUI system, it can be synchronized with other "smart" Mi Home devices.

### 1. Download the application

Enter "Mi Home" into the search box of the App Store / Play Market or scan the QR code below to download and install Mi Home application.



## 2. Adding the device

Open "My devices" page, select the gateway, with which the synchronization will occur, on the "Hardware" page click "Add device", select Aqara Intelligent Curtain (ZigBee version for opening and closing curtains), continue the actions according to the prompts in the application, until you hear a voice notification from the gateway, that the device is successfully connected.

①



Main  
Automation  
Devices

Gateway  
Add the device

Press "Add the device"

②



Press and hold the  
reset button for 5  
seconds until the  
Bluetooth indicator  
begins to flicker.

## 3. Buy more

In order to purchase more "smart" devices and other quality items, download the Mi Home application and go to the "Shop" section, or scan the QR code below to view the store website.



## Main parameters

Model:	ZNCLDJ11LM
Dimensions:	70 × 50 × 267 mm
Input:	100-240B ~ , 50/60 Hz
Standard:	Q/QLML006-2017
CMIIT ID:	2016DP0776
Work temperature:	-20°C+55°C
Work humidity:	Relative humidity 10-90%, w/o condencity
Interface:	ZigBee
Lifting capacity:	to 50 kg

Before use, carefully read the user manual

---

Hotline support: 400-990-7930  
Manufacturer: Shenzhen Lumi Lianchuang  
Technology Co., LTD  
Address: Shenzhen City, Nanshan District,  
Taoyuan Subdistrict, Liuxian  
Avenue, 1 Tangling Road, Jinqi  
Zhigu Building, Floor 8

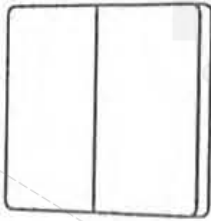
## Explanation of the indicator

Indicator status	Explanation
The Bluetooth indicator blinks once	Power on
The Bluetooth indicator lights continuously	Successful network connection, cornice works
Bluetooth indicator blinks quickly	Connection to network
Bluetooth indicator blinks slowly	No network connection (or settings reset to factory default)

## Tips for syncing with other devices

You can synchronize the cornice with even more "smart" devices of the "smart house" ecosystem.

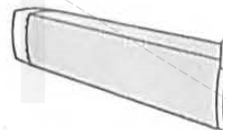
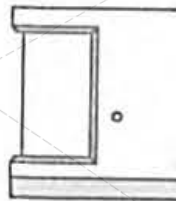
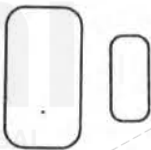
### 1. Wireless cornice control with remote switch



Remote switch  
(2 buttons, attached to  
the surface on a double-  
sided adhesive tape)

Aqara Intelligent Curtain  
(ZigBee version for opening  
and closing curtains)

### 2. Automatic opening of curtains upon return home; automatic closing of curtains after leaving the house;



Sensor for  
opening/closing  
windows/doors

Motion Sensor

Aqara Intelligent  
Curtain

## Name and content of harmful substances in the product

Name of component	Harmful substances					
	(Pb)	(Hg)	(Cd)	(Cr(VI))	(PBB)	(PBDE)
Aluminium alloy body	O	O	O	O	O	O
Hard plastic	O	O	O	O	O	O
Metal	O	O	O	O	O	O
Resistor	O	O	O	O	O	O
Quarz generator	X	O	O	O	O	O
Diode	X	O	O	O	O	O

**This table is created in accordance with the provisions of the standard SJ / T 11364.**

O: the content of this harmful substance in all the homogeneous materials of this component is within the requirements of the standard GB / T 26572.

X: the content of this harmful substance in at least one of the homogeneous materials of this component exceeds the limits of the requirements of the standard GB / T 26572.

