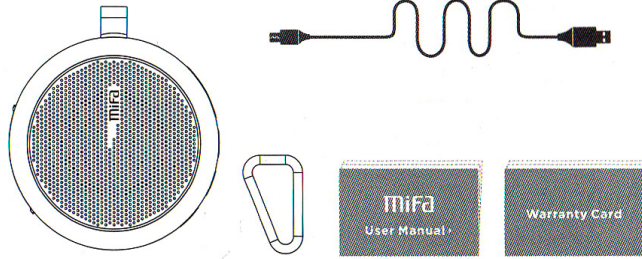


Portable speaker MiFa

Accessories

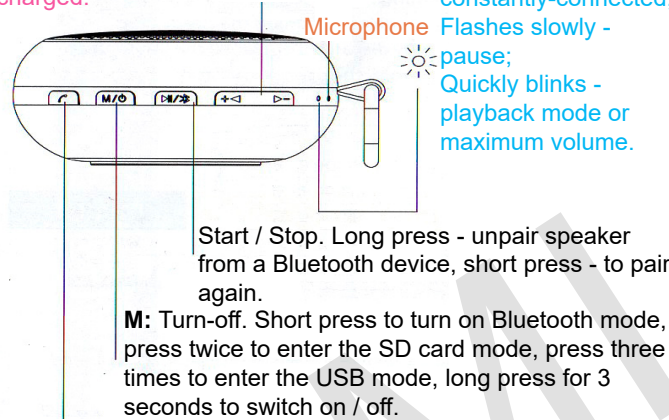


MiFa speaker
Shackle
Manual
Warranty card
USB cable

Speaker structure

V- Prev.: Short press for previous track, long press for volume down.
V+ Next.: Short press for next track. long press for volume up.

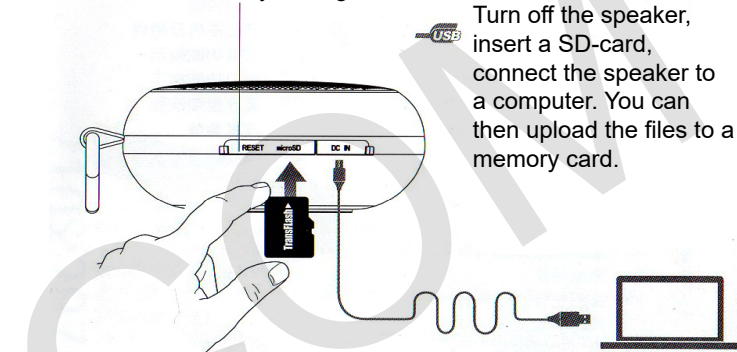
Red indicator: Blinks when charging is needed, lights when charges, out when charged.



Incoming calls button. Short press to answer, long press to deny.

Interfaces

Reset to factory settings

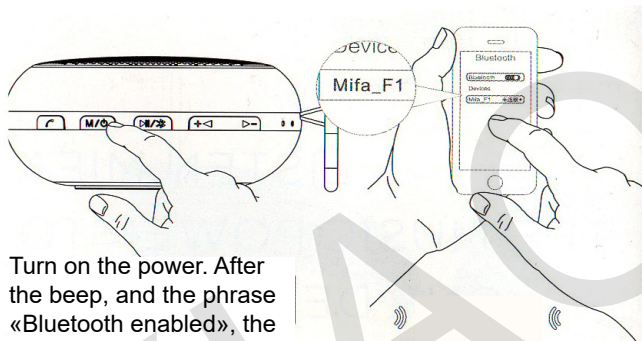


To charge the battery, connect an adapter to 5V, 500mA DC or computer via USB.

USB sound card Mode. To connect the speaker with computer, press M. Now, you can play music from your computer.

Insert an SD-card, press M button to enter the card mode to play music.

Pairing with other device via Bluetooth



Turn on the power. After the beep, and the phrase «Bluetooth enabled», the blue indicator light starts to flash. The device is ready to communicate with your smartphone.

On the smartphone find MiFa F1 device and connect to it. The default password is 0000.

Speaker will connect with familiar devices automatically. To unbind speaker from device, long press the Start / Stop button. And only after that pair it with another device.

Characteristics

Type of device	Portable Bluetooth speaker
Speaker system	Mono
Controls	Button
Features	One button control, handsless control, Bluetooth connection, SD-card, USB sound card mode, card reader.
Memory	to 32 GB flash card support
Power	1100 mAh battery
Charger	5V 500 mA adaptor, USB connection
Output power	3 W, 4 Ohm
Freq range	80 - 18 000 Hz
Bluetooth	2.1 +EDR
USB	USB 2.0, support USB 1.1
Formats	ape, flac, wma, wav, mp3

FAQ

- MiFa F1 speaker is not connected to a Bluetooth device.**
Reset the speaker. When asked, set password 0000.
- Playback sticks.**
Check Bluetooth connection, range (to 10 m.), reset speaker if needed.
- File format is not supported.**
Check type of the SD-card file system (supports FAT32). Also check music file formats. Speaker supports ape, flac, wma, wav, mp3 files with any bitrate.
- Indicator shows connection is on, but music is no playing.**
Check a volume of speaker, or play and pause mode.

FAQ

5. Speaker is no playing

Check a battery level

6. System stuck

Reset speaker

7. Acceptable music files bitrate.

MP3: 8-320 kbps, WMA: 32-384 kbps, APE: 600-1400 kbps, FLAC: 600-1400 kbps, WAV: 32-1200 kbps.

Notices

1. Use and store devices at room temperature;
2. Do not leave the device in the rain or in a humid atmosphere;
3. Do not throw, drop or puncture the device in order to avoid damage;
4. Do not disassemble, attempt to repair or modify the product;
5. Do not use chemical solvents to clean the device;
6. Do not put a lithium battery in a fire to avoid explosion.

Warranty Terms

The list of circumstances (including, but not limited to), in which the compensation is not possible:

- Repair of the device by unauthorized service centers, drop, neglect, abuse, liquid ingress, an accident, or if you have broken or slipped label and labeling devices;
- The warranty period is ended;
- Damage caused by force majeure;
- Problems that are not included in the list of faults;
- Damage to the device arising from use of the device investigation for other purposes or intentional damage.

Manufacturer: MIFA INNOVATIONS LLC. Designed in US / Made in China.

Features of the device

1. MiFa F1 supports a response function of a phone, connected to the device via Bluetooth;
2. After 10 minutes of inactivity, speaker is automatically turned off to save electricity;
3. The speaker supports a hands-free control mode;
4. Supports Bluetooth reconnect with one button;
5. Supports iOS playing ringtones and music from your devices;
6. Supports USB sound card modes, and SD card reader.

Warranty

Warranty service is carried out in accordance with the law on «consumer rights» and the «Law on the quality of products.» The warranty service includes:

During the warranty period, you have the right to repair, exchange or return an item. For repair, replacement or return of goods you need a warranty card.

1. Within 7 days from the date of purchase, in case of a problem of «fault list» Xiaomi service center determines the cause of the problem, then you can choose a free replacement of product, return or repair.
2. Within 8-15 days of purchase, in case of a problem of «fault list» Xiaomi service center defines the problem, then you choose a free replacement or repair of the goods.
3. Within 12 months from the date of purchase, in case of a problem from the «List of faults», Xiaomi service center defines the problem, then you are given a free repair.